

# Sea Lamprey Papercraft

Make your own vampire fish of the Great Lakes! Ages 10+

Materials needed: Scissors and either glue or scotch tape (or both!)

## Instructions:

1. Cut out all pieces along the black solid lines. Look at the finished model below to see where all the pieces will go and how they line up. The “Key to lines” on the right shows how each fold will be made.

2. Start by constructing each part of the body (labeled **Front**, **Middle**, and **End**) individually by matching the numbers and gluing or taping the tabs. If you are having trouble closing the tubes for the body parts, try using a pencil as a brace on the inside of the tube while pressing from the outside.

3. Next, glue or tape the body pieces together by slotting them into one another. Close the end of the tail where shown with an asterisk (\*) with glue or tape.

4. Bend the tabs on all fin pieces (hint: those are all valley folds). Then glue both halves of each fin together (but not the tabs!) so that it forms a single fin with color on both sides. Glue or tape the tabs of the fins to the surface of the body where indicated by the pink lines with the letter matching the fin.

5. Finally, bend the tabs on the mouth. Glue or tape the mouth to the front of the sea lamprey. The tabs can be placed on the inside or outside, whichever is easier for you! "T" indicates the top of the mouth, and "B" the bottom.

6. Have fun with your sea lamprey!

Are you curious to learn more about sea lampreys? Check out our website!  
[www.sealamprey.org](http://www.sealamprey.org)

<b>Key to lines</b>
Mountain fold - - - - -
Valley fold - - . - . - -
Cut line _____
Attachment site _____
Curve slightly .....

Finished model:

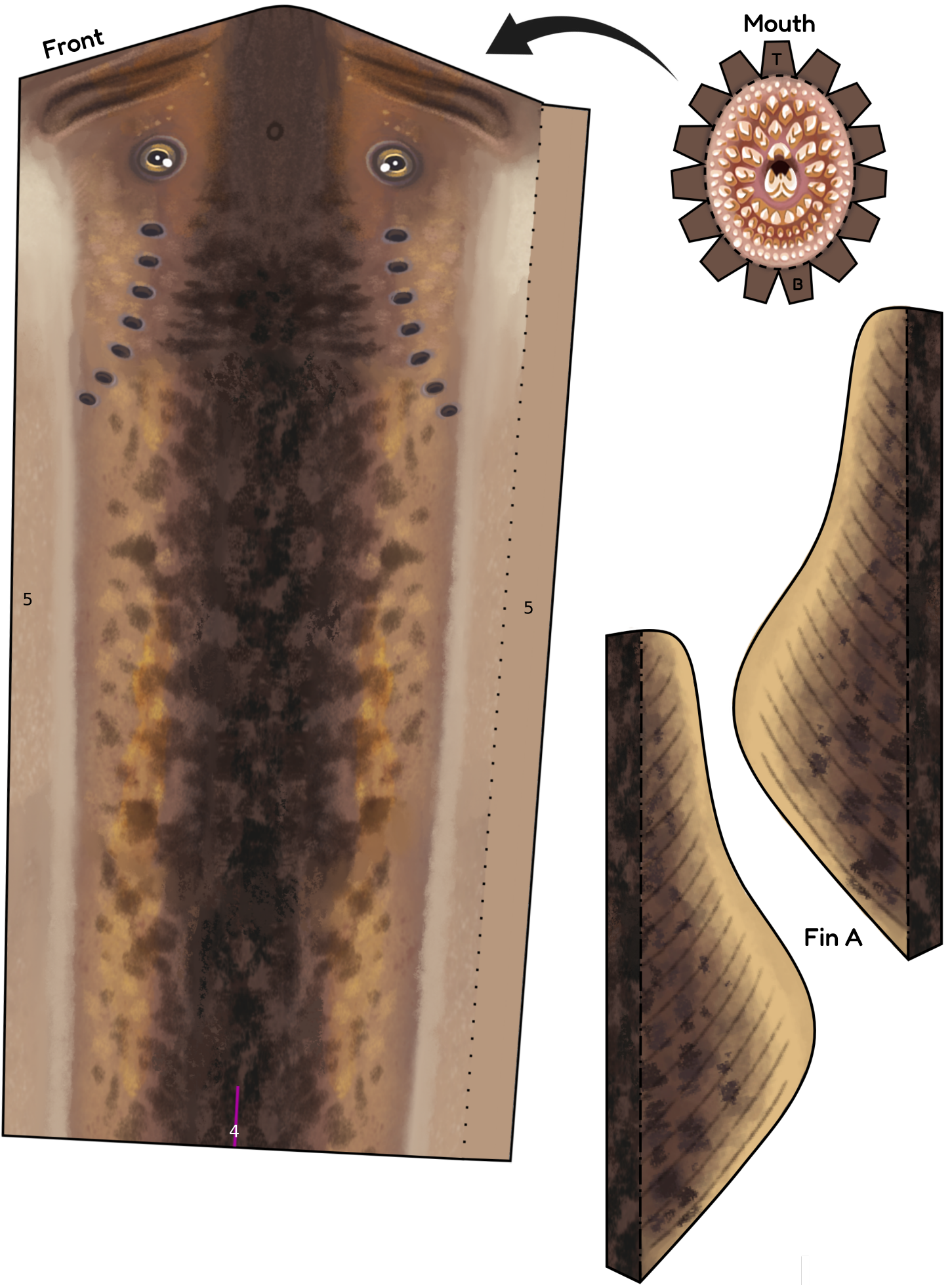


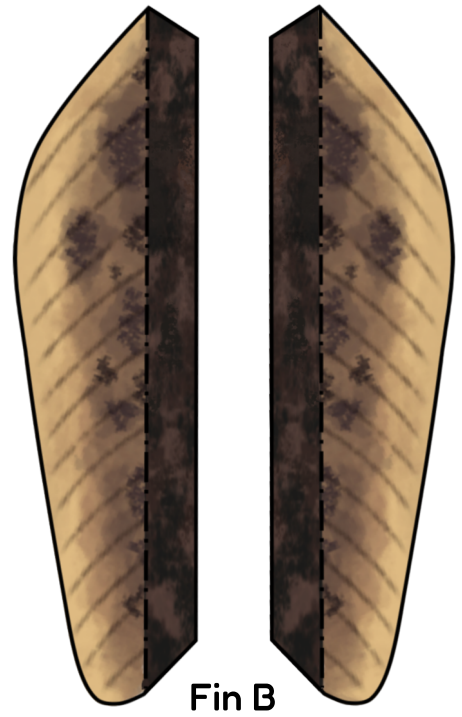
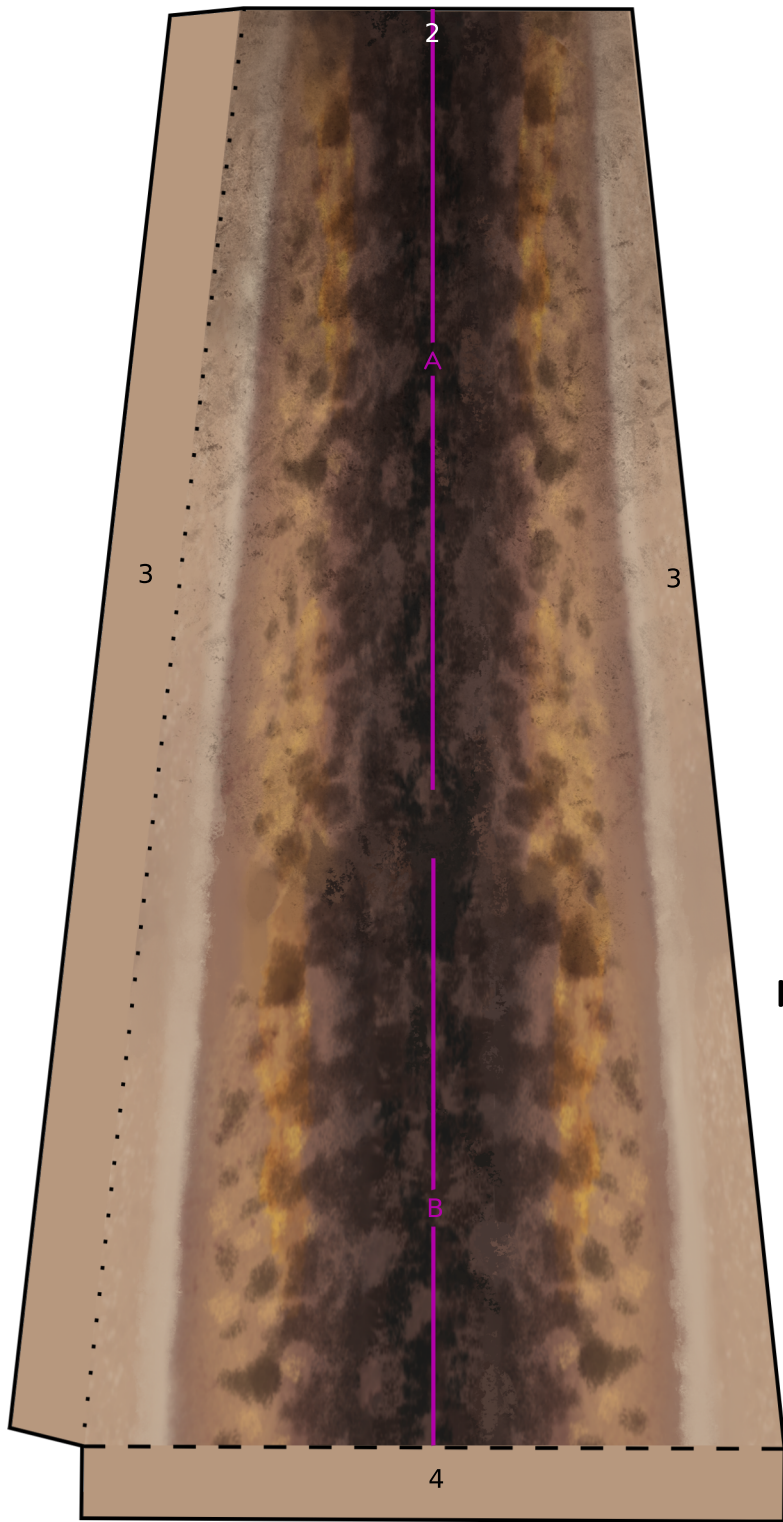
Front of finished model:



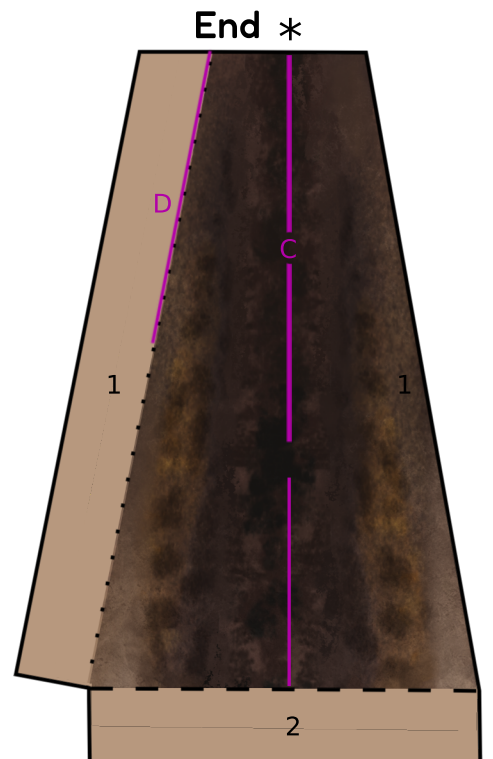
Created by Taaja Tucker-Silva  
in partnership with the  
Great Lakes Fishery Commission







Middle



Fin D

Fin C

